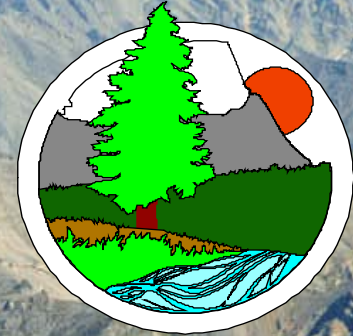


Alaska Department of Natural Resources Division of Geological & Geophysical Surveys

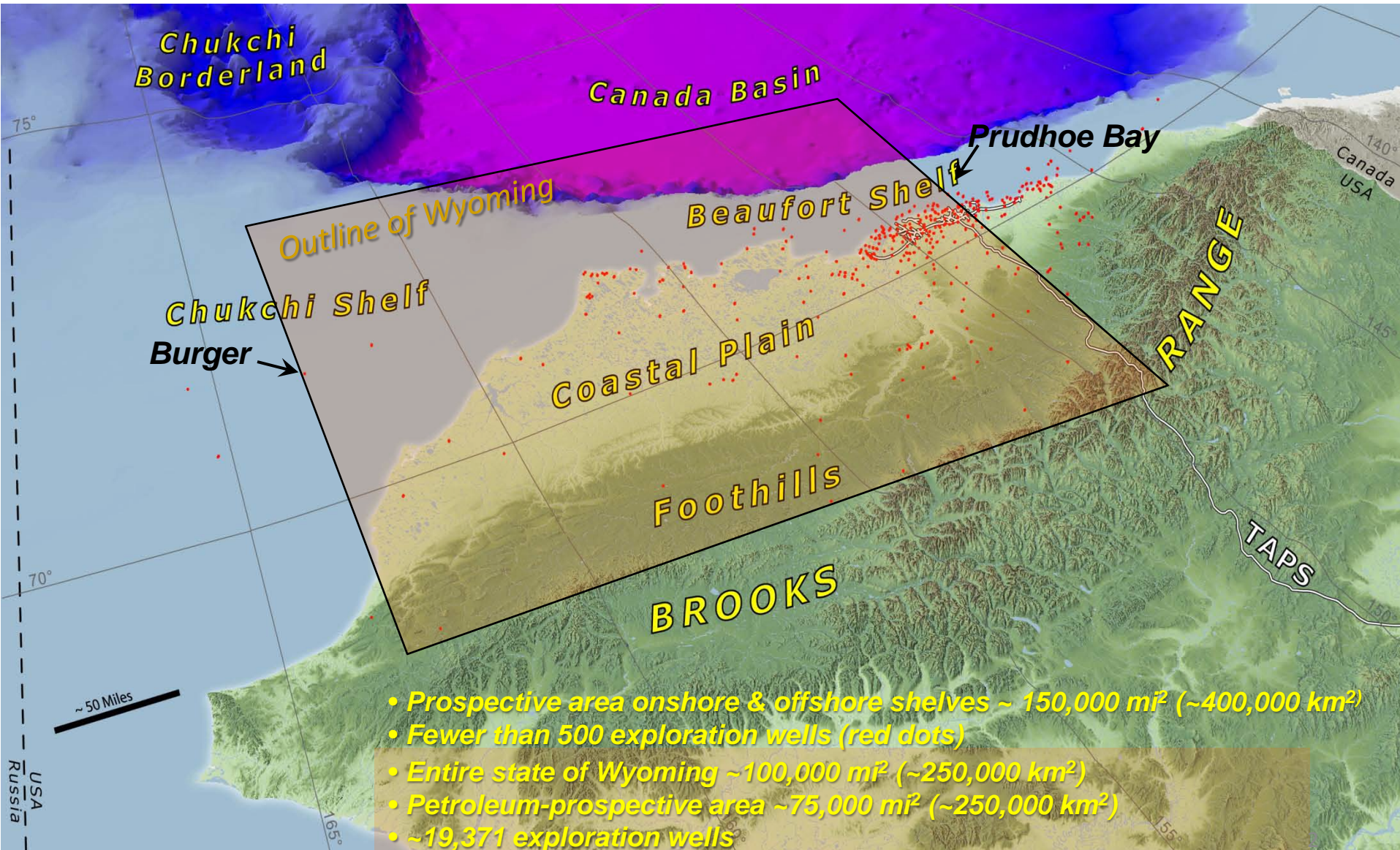


USGS Resource Assessments Conventional Oil & Gas Arctic Alaska

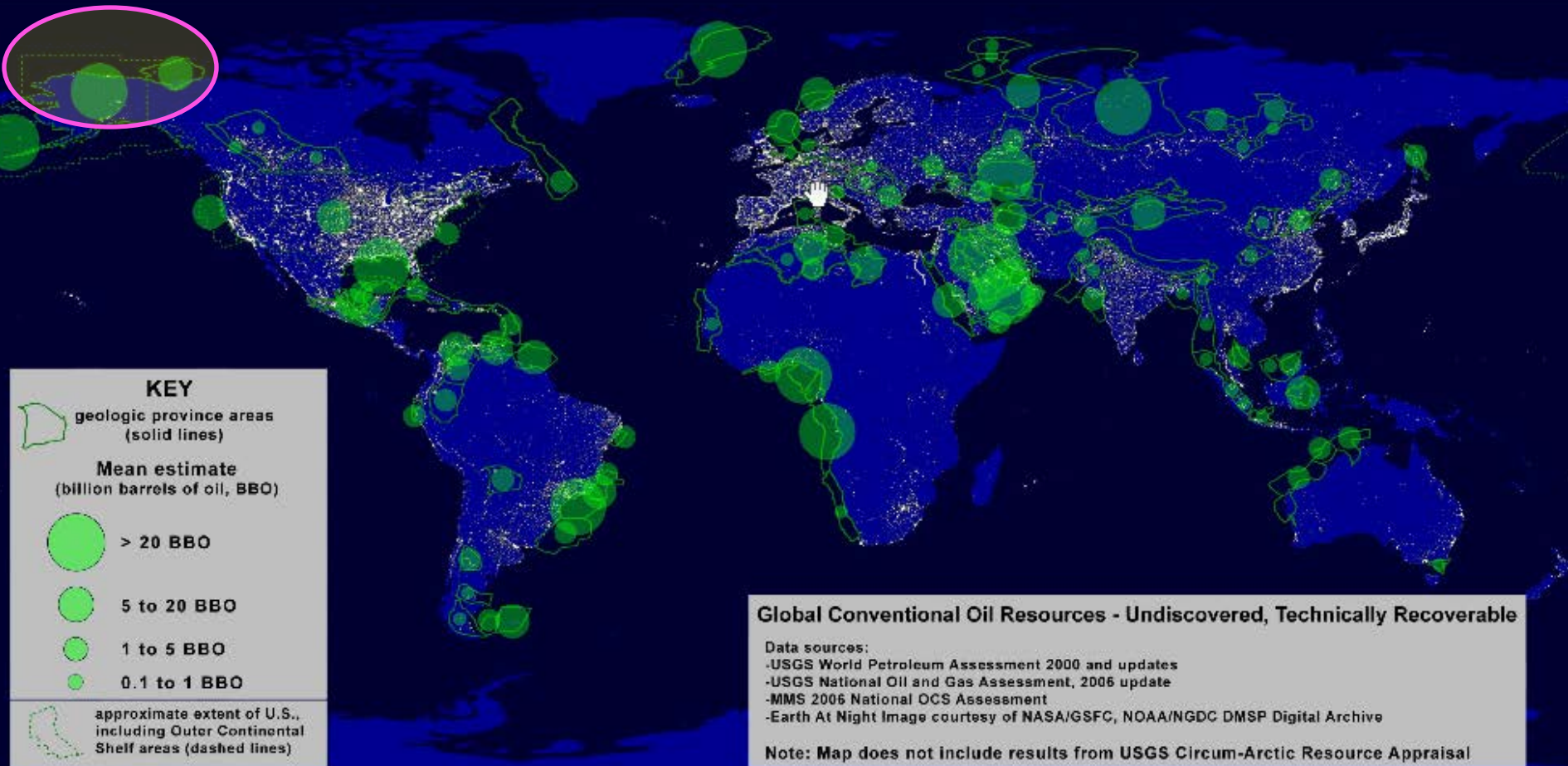
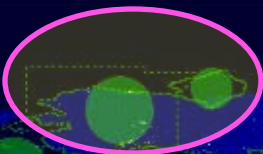
Robert Swenson
State Geologist & Director
Division of Geological & Geophysical Surveys

<http://www.dggs.alaska.gov>
<http://akgeology.info>

Arctic Alaska Conventional Oil & Gas Exploration Maturity

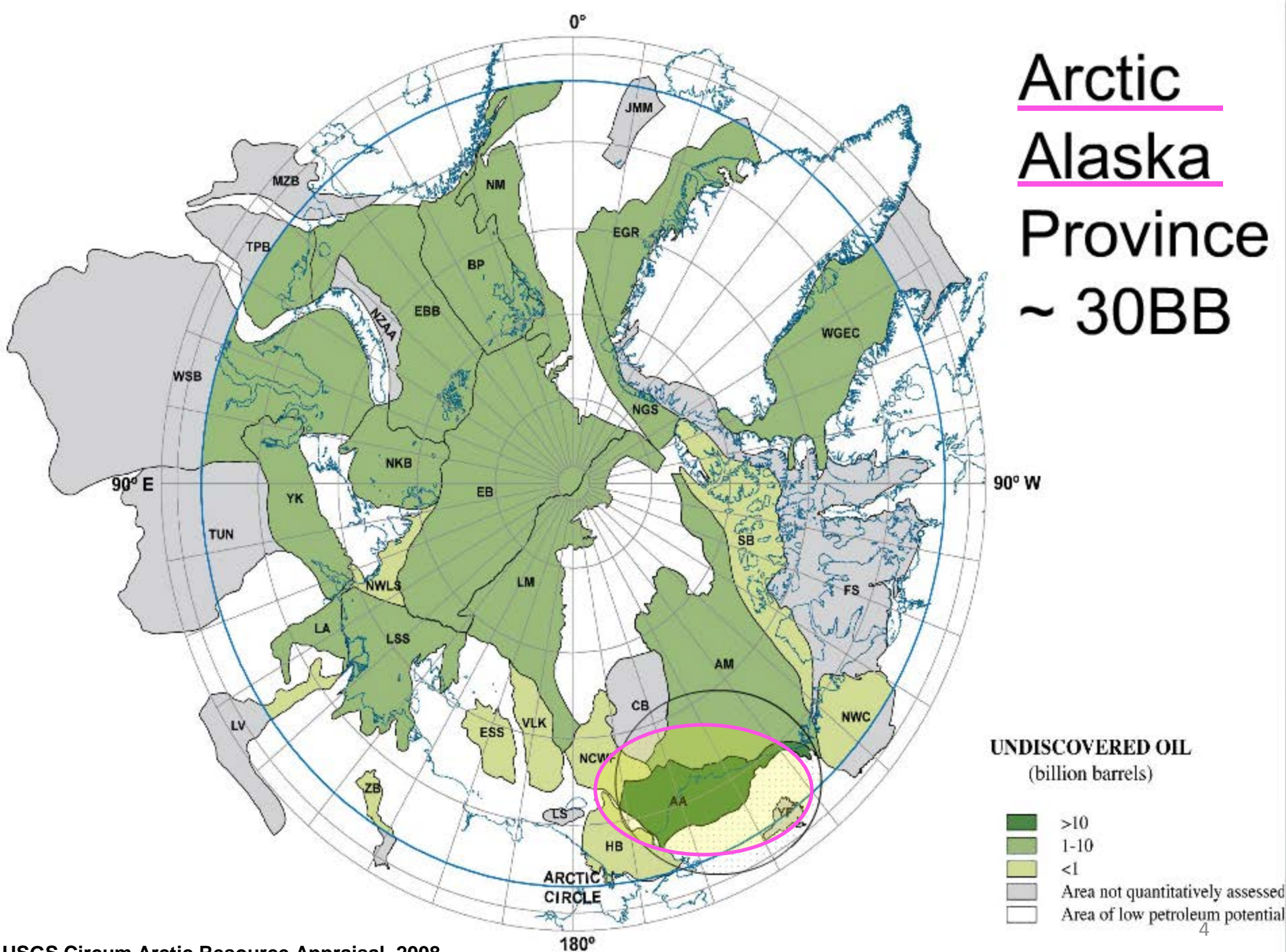


Global Conventional Oil Resources

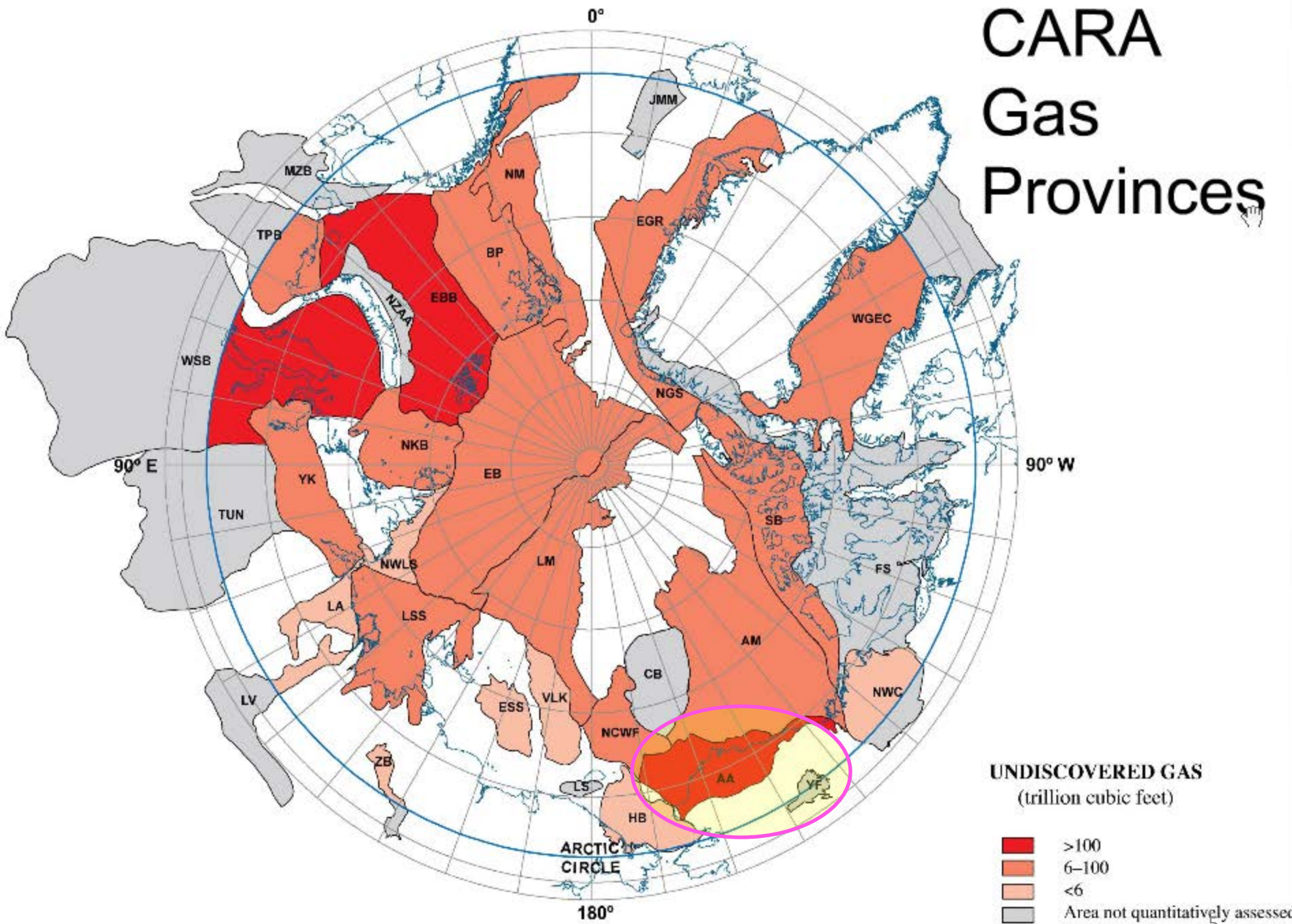


Note: Does not include results from USGS Circum-Arctic Oil and Gas Resource Appraisal study.

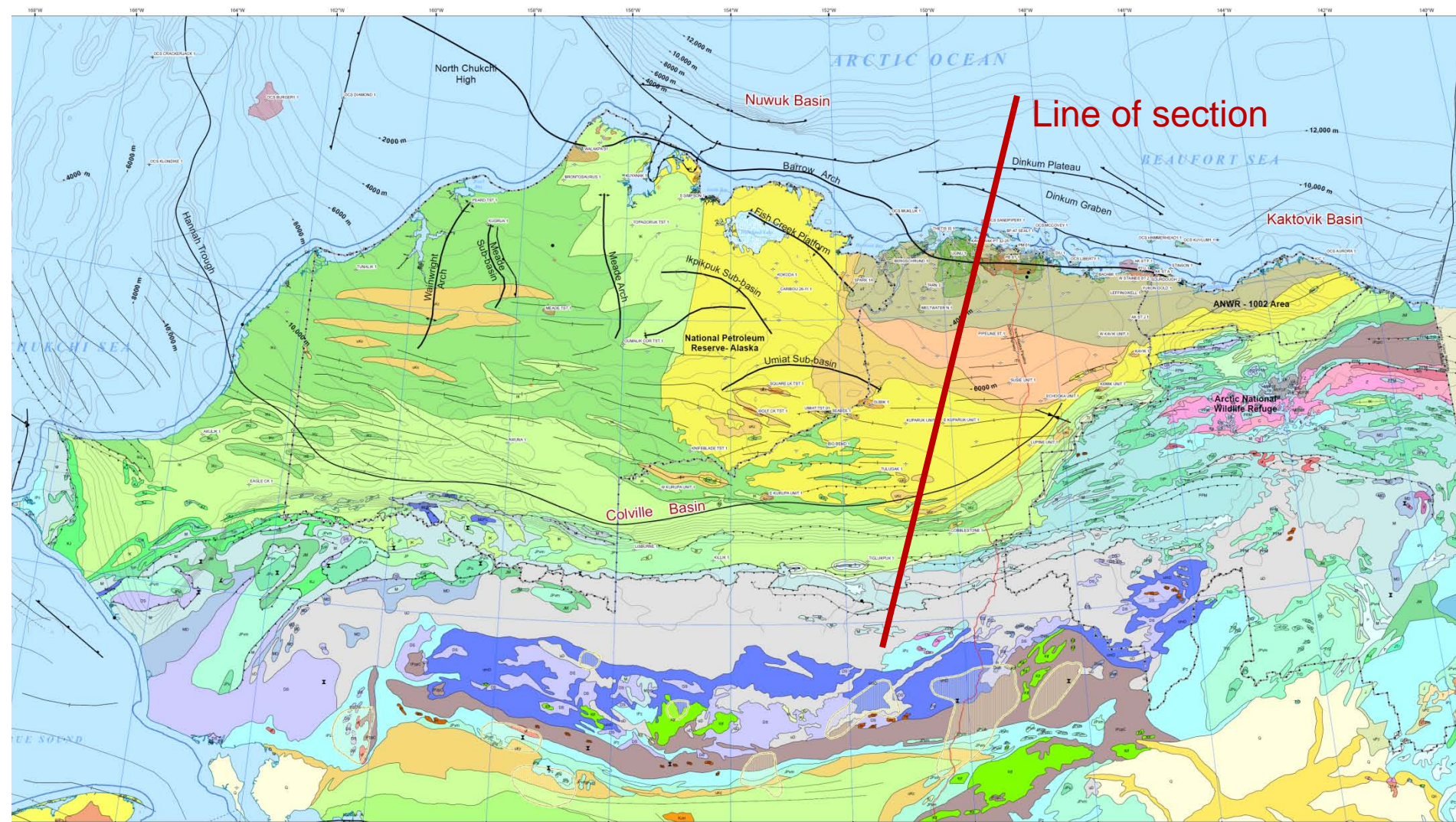
Arctic Alaska Province ~ 30BB



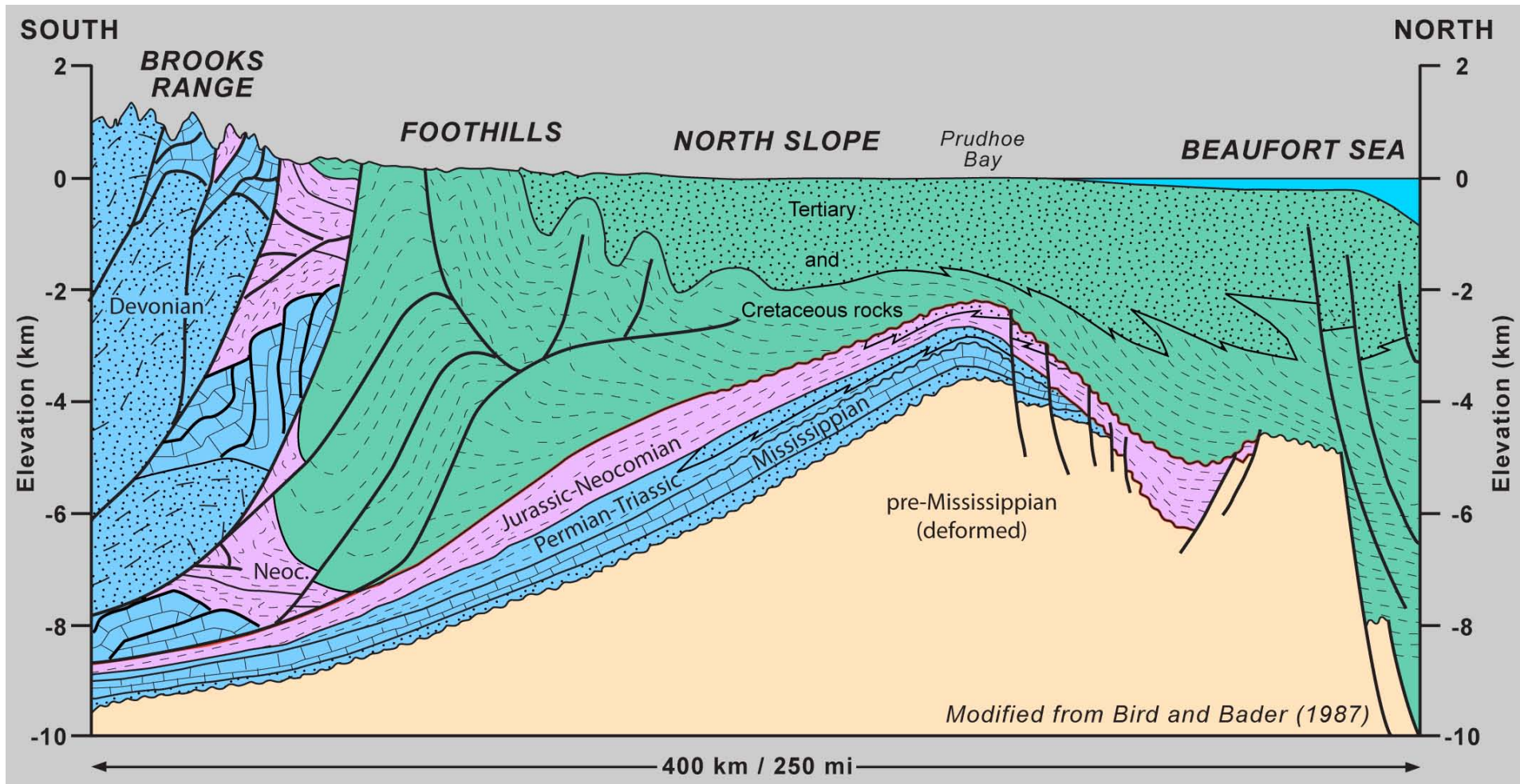
CARA Gas Provinces



North Slope Regional Geology

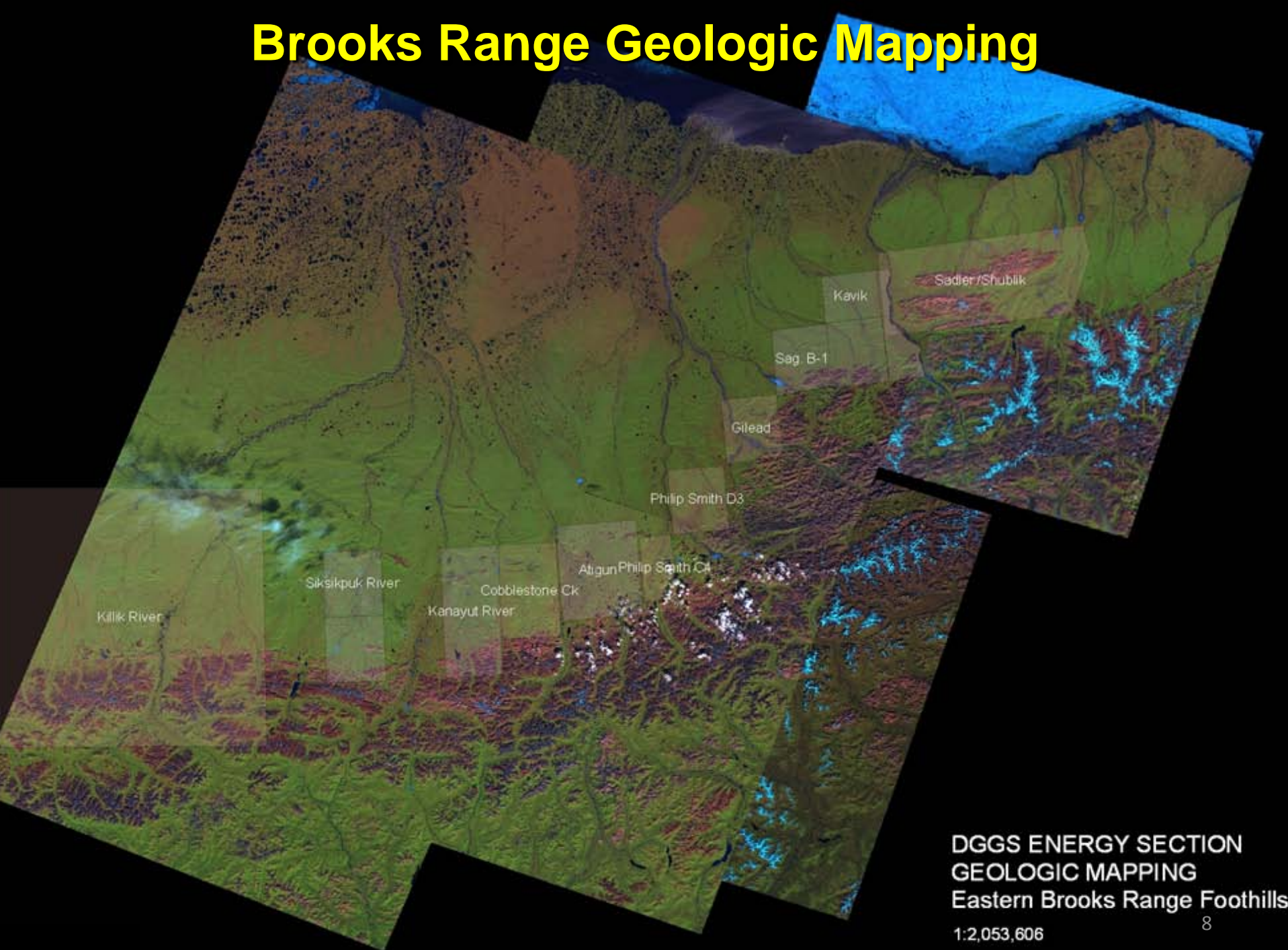


Simplified and Generalized Regional Cross-section



USGS Slide

Brooks Range Geologic Mapping

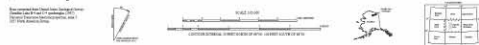
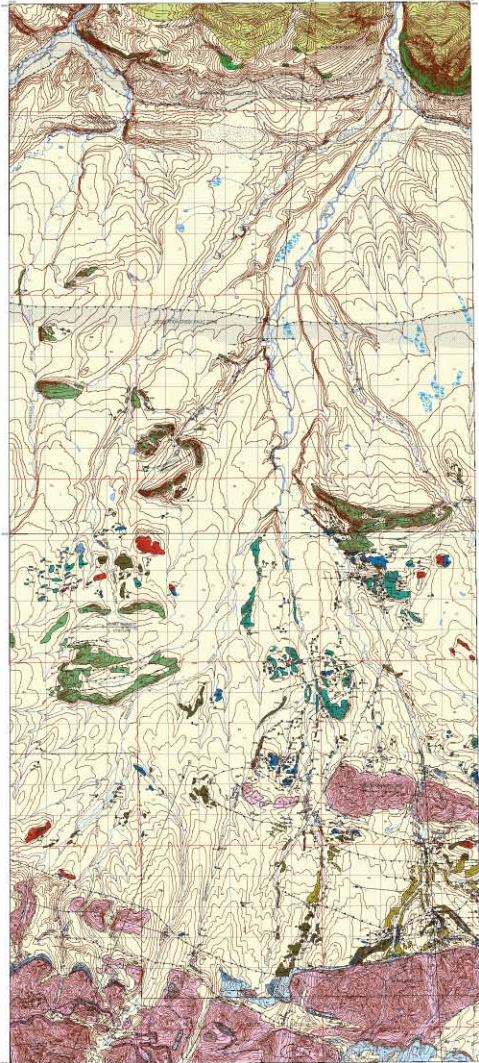


DGGS ENERGY SECTION
GEOLOGIC MAPPING
Eastern Brooks Range Foothills

1:2,053,606

Geologic Mapping

ALASKA DEPARTMENT OF GEOLOGICAL AND GEOSPATIAL SERVICES



SYMBOLS AND ABBREVIATIONS

STRATIGRAPHIC UNITS

UNITS

UNIT DESCRIPTIONS

UNIT SYMBOLS

UNIT ABBREVIATIONS

UNIT DATES

UNIT THICKNESSES

UNIT CONTACTS

UNIT CORRELATIONS

UNIT REFERENCES

UNIT NOTES

UNIT DETAILS

UNIT SPECIFICATIONS

UNIT REQUIREMENTS

UNIT STANDARDS

UNIT PROCEDURES

UNIT GUIDELINES

UNIT BEST PRACTICES

UNIT TRENDS

UNIT RESEARCH

UNIT DEVELOPMENTS

UNIT APPLICATIONS

UNIT IMPACTS

UNIT BENEFITS

UNIT CHALLENGES

UNIT OPPORTUNITIES

UNIT RISKS

UNIT MITIGATIONS

UNIT MONITORING

UNIT EVALUATION

UNIT IMPROVEMENTS

UNIT INNOVATIONS

UNIT FUTURE

UNIT CONCLUSIONS

UNIT RECOMMENDATIONS

UNIT REFERENCES

UNIT NOTES

UNIT DETAILS

UNIT SPECIFICATIONS

UNIT REQUIREMENTS

UNIT STANDARDS

UNIT PROCEDURES

UNIT GUIDELINES

UNIT BEST PRACTICES

UNIT TRENDS

UNIT RESEARCH

UNIT DEVELOPMENTS

UNIT APPLICATIONS

UNIT IMPACTS

UNIT BENEFITS

UNIT CHALLENGES

UNIT OPPORTUNITIES

UNIT RISKS

UNIT MITIGATIONS

UNIT MONITORING

UNIT EVALUATION

UNIT IMPROVEMENTS

UNIT INNOVATIONS

UNIT FUTURE

UNIT CONCLUSIONS

UNIT RECOMMENDATIONS

SYMBOLS AND ABBREVIATIONS

STRATIGRAPHIC UNITS

UNITS

UNIT DESCRIPTIONS

UNIT SYMBOLS

UNIT ABBREVIATIONS

UNIT DATES

UNIT THICKNESSES

UNIT CONTACTS

UNIT CORRELATIONS

UNIT REFERENCES

UNIT NOTES

UNIT DETAILS

UNIT SPECIFICATIONS

UNIT REQUIREMENTS

UNIT STANDARDS

UNIT PROCEDURES

UNIT GUIDELINES

UNIT BEST PRACTICES

UNIT TRENDS

UNIT RESEARCH

UNIT DEVELOPMENTS

UNIT APPLICATIONS

UNIT IMPACTS

UNIT BENEFITS

UNIT CHALLENGES

UNIT OPPORTUNITIES

UNIT RISKS

UNIT MITIGATIONS

UNIT MONITORING

UNIT EVALUATION

UNIT IMPROVEMENTS

UNIT INNOVATIONS

UNIT FUTURE

UNIT CONCLUSIONS

UNIT RECOMMENDATIONS

SYMBOLS AND ABBREVIATIONS

STRATIGRAPHIC UNITS

UNITS

UNIT DESCRIPTIONS

UNIT SYMBOLS

UNIT ABBREVIATIONS

UNIT DATES

UNIT THICKNESSES

UNIT CONTACTS

UNIT CORRELATIONS

UNIT REFERENCES

UNIT NOTES

UNIT DETAILS

UNIT SPECIFICATIONS

UNIT REQUIREMENTS

UNIT STANDARDS

UNIT PROCEDURES

UNIT GUIDELINES

UNIT BEST PRACTICES

UNIT TRENDS

UNIT RESEARCH

UNIT DEVELOPMENTS

UNIT APPLICATIONS

UNIT IMPACTS

UNIT BENEFITS

UNIT CHALLENGES

UNIT OPPORTUNITIES

UNIT RISKS

UNIT MITIGATIONS

UNIT MONITORING

UNIT EVALUATION

UNIT IMPROVEMENTS

UNIT INNOVATIONS

UNIT FUTURE

UNIT CONCLUSIONS

UNIT RECOMMENDATIONS



SYMBOLS AND ABBREVIATIONS

STRATIGRAPHIC UNITS

UNITS

UNIT DESCRIPTIONS

UNIT SYMBOLS

UNIT ABBREVIATIONS

UNIT DATES

UNIT THICKNESSES

UNIT CONTACTS

UNIT CORRELATIONS

UNIT REFERENCES

UNIT NOTES

UNIT DETAILS

UNIT SPECIFICATIONS

UNIT REQUIREMENTS

UNIT STANDARDS

UNIT PROCEDURES

UNIT GUIDELINES

UNIT BEST PRACTICES

UNIT TRENDS

UNIT RESEARCH

UNIT DEVELOPMENTS

UNIT APPLICATIONS

UNIT IMPACTS

UNIT BENEFITS

UNIT CHALLENGES

UNIT OPPORTUNITIES

UNIT RISKS

UNIT MITIGATIONS

UNIT MONITORING

UNIT EVALUATION

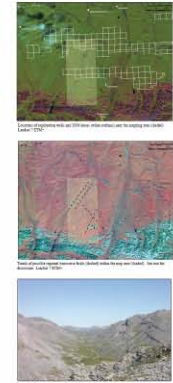
UNIT IMPROVEMENTS

UNIT INNOVATIONS

UNIT FUTURE

UNIT CONCLUSIONS

UNIT RECOMMENDATIONS



SYMBOLS AND ABBREVIATIONS

STRATIGRAPHIC UNITS

UNITS

UNIT DESCRIPTIONS

UNIT SYMBOLS

UNIT ABBREVIATIONS

UNIT DATES

UNIT THICKNESSES

UNIT CONTACTS

UNIT CORRELATIONS

UNIT REFERENCES

UNIT NOTES

UNIT DETAILS

UNIT SPECIFICATIONS

UNIT REQUIREMENTS

UNIT STANDARDS

UNIT PROCEDURES

UNIT GUIDELINES

UNIT BEST PRACTICES

UNIT TRENDS

UNIT RESEARCH

UNIT DEVELOPMENTS

UNIT APPLICATIONS

UNIT IMPACTS

UNIT BENEFITS

UNIT CHALLENGES

UNIT OPPORTUNITIES

UNIT RISKS

UNIT MITIGATIONS

UNIT MONITORING

UNIT EVALUATION

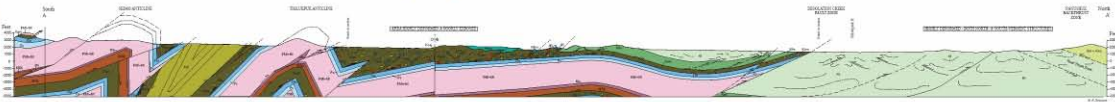
UNIT IMPROVEMENTS

UNIT INNOVATIONS

UNIT FUTURE

UNIT CONCLUSIONS

UNIT RECOMMENDATIONS



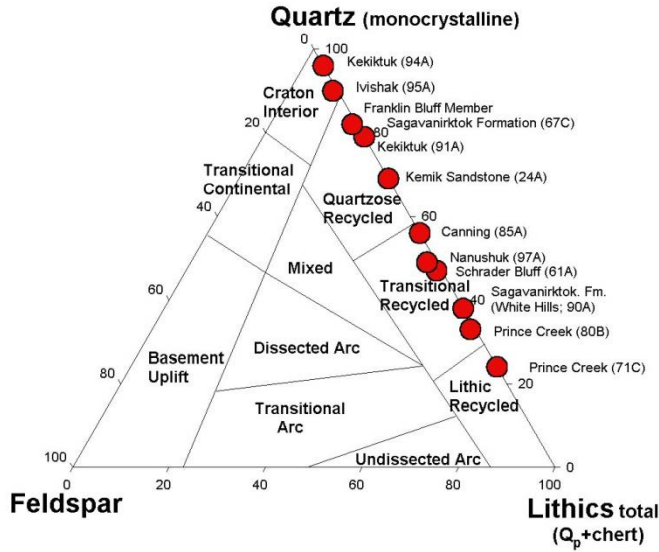
GEOLOGIC MAP OF THE SIKSIKPUK RIVER AREA, CHANDLER LAKE QUADRANGLE, ALASKA

by
P.R. Poppo, W.K. Walker, M.A. Warten, R.E. Swanson, C.G. Mull, J.A. Donohue, E.L. Harris, E.S. Frazee, R.R. Bredemeyer, and A.M. Loveland

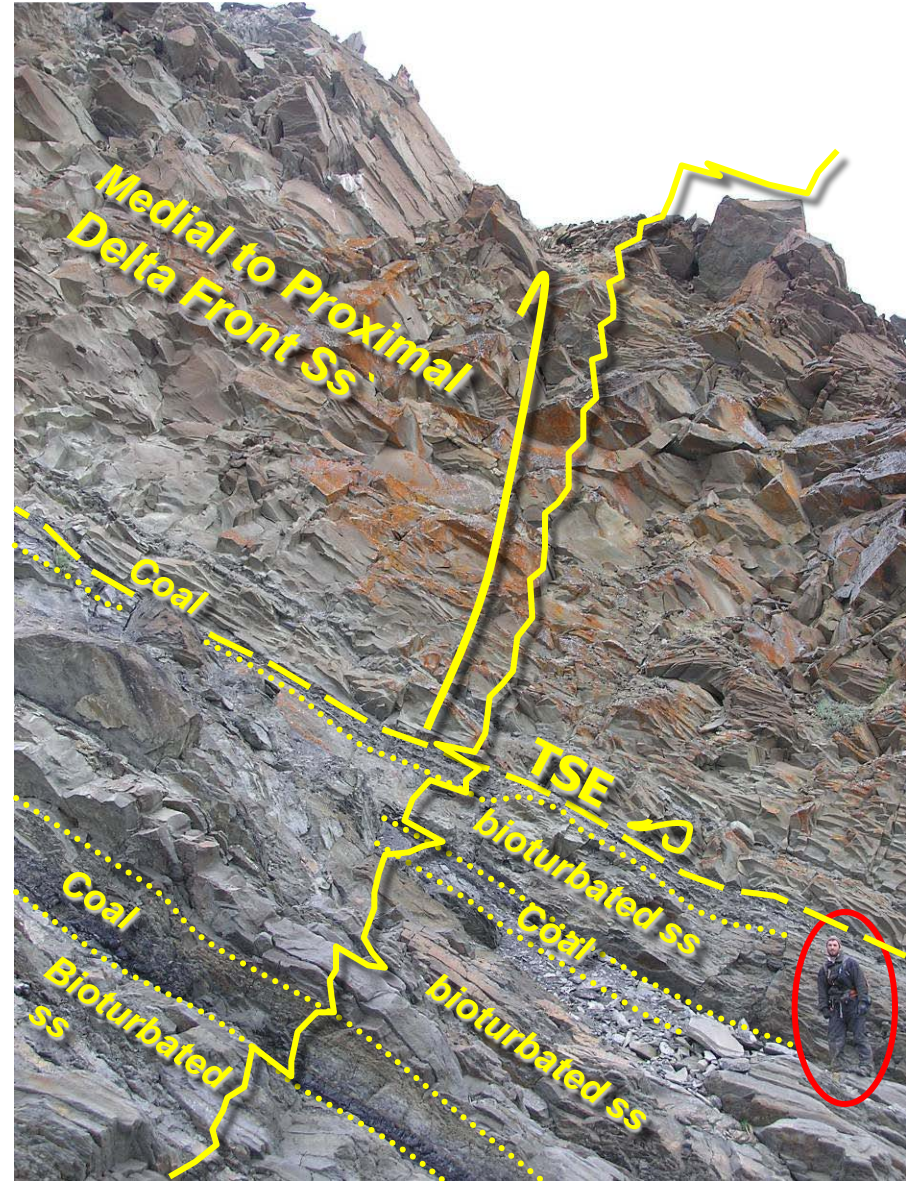
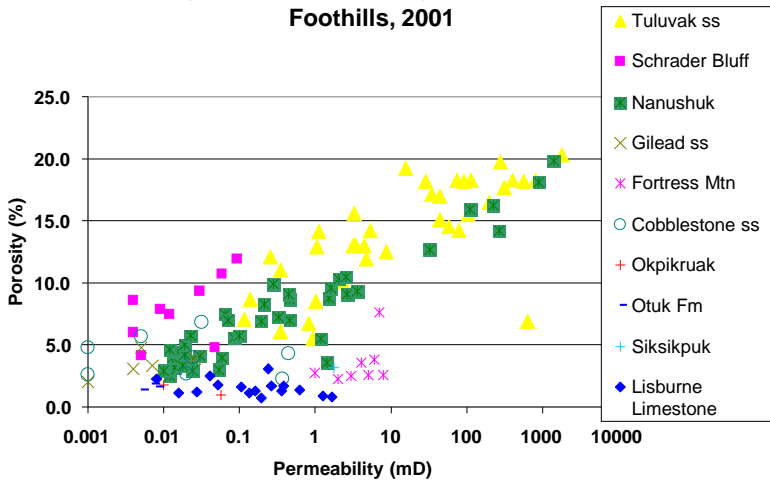


Topical Petroleum-related Studies

Quartz (monocrystalline)-Feldspar-Lithics (total)



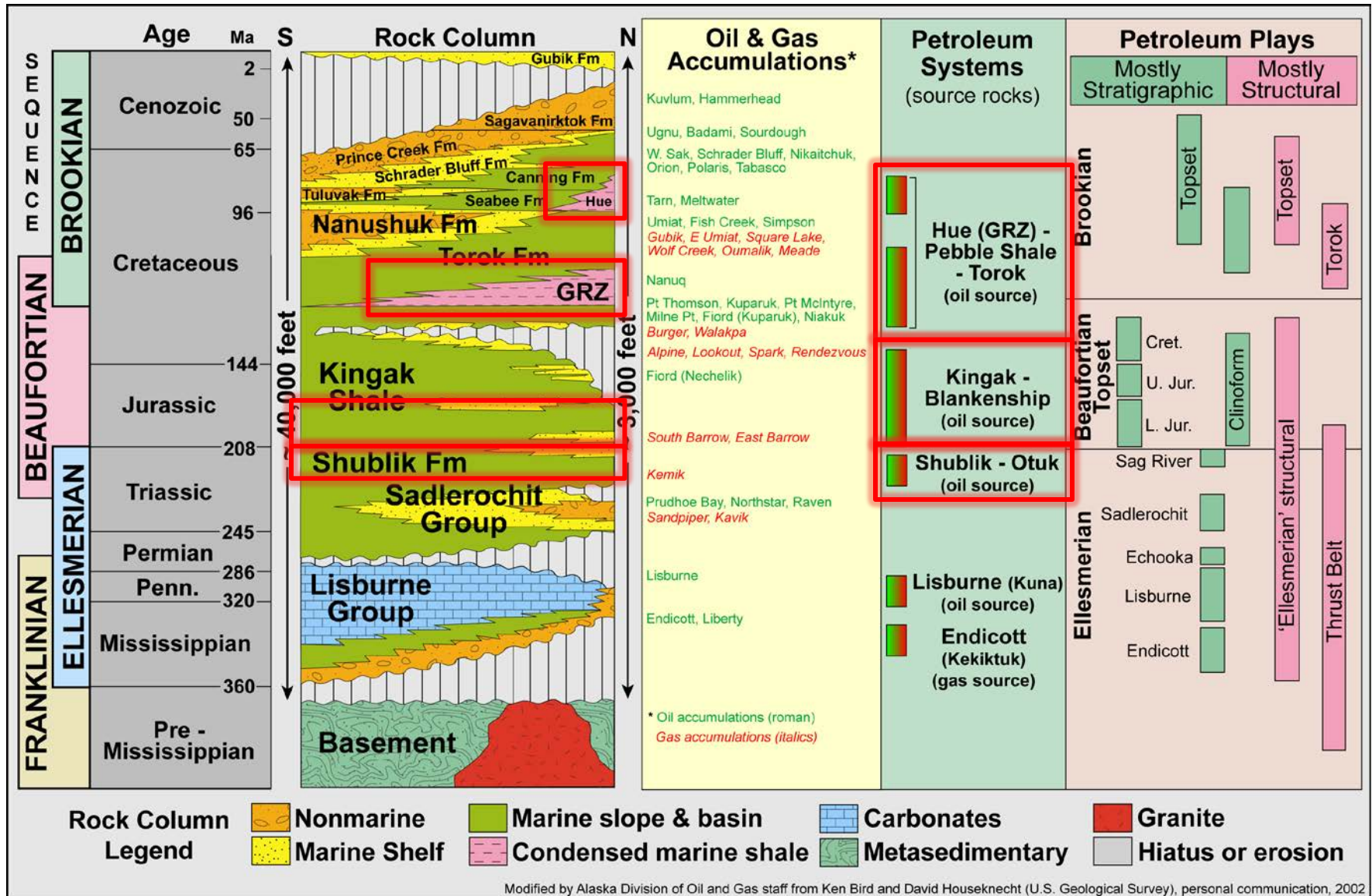
Porosity (%) vs. Permeability (mD) North Slope Foothills, 2001



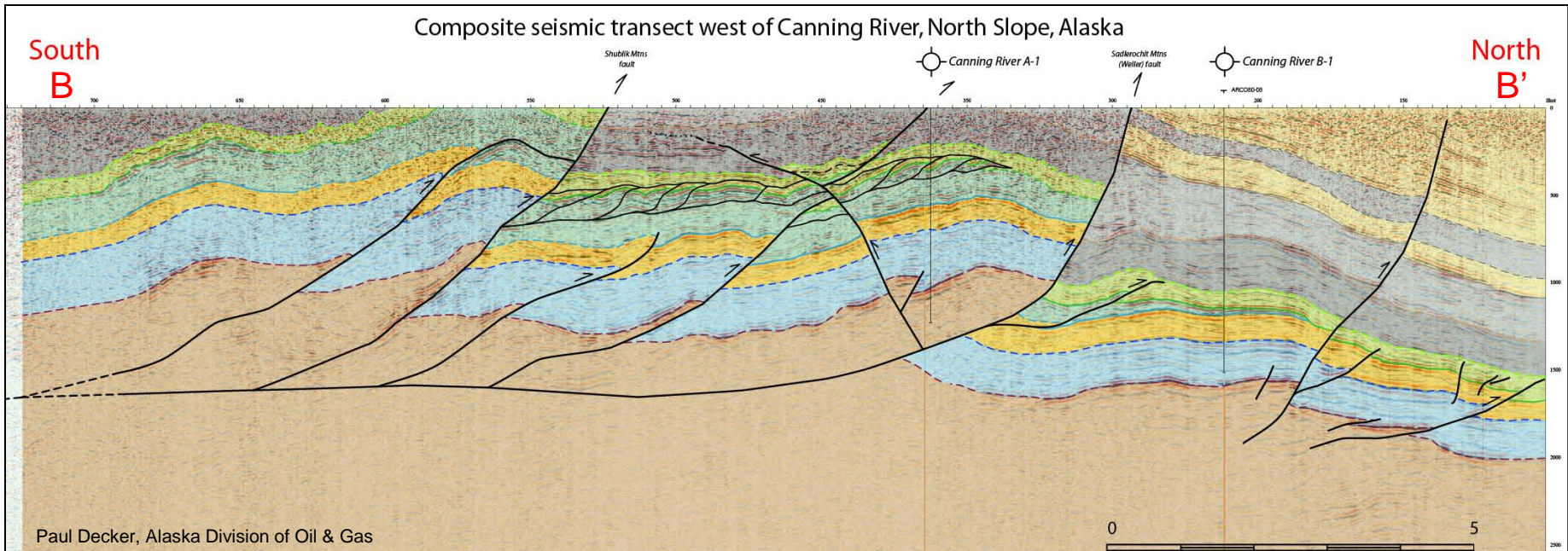
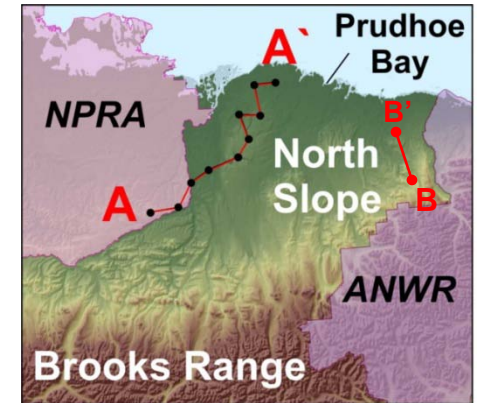
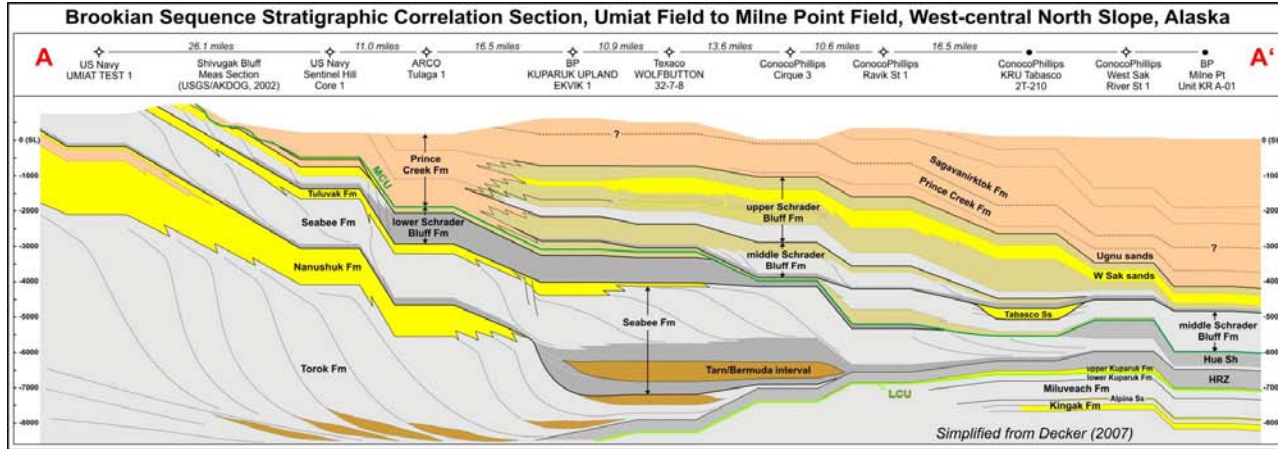
Killik Bend non-marine to deltaic succession, highstand aggradational system tract¹⁰

North Slope Petroleum Systems

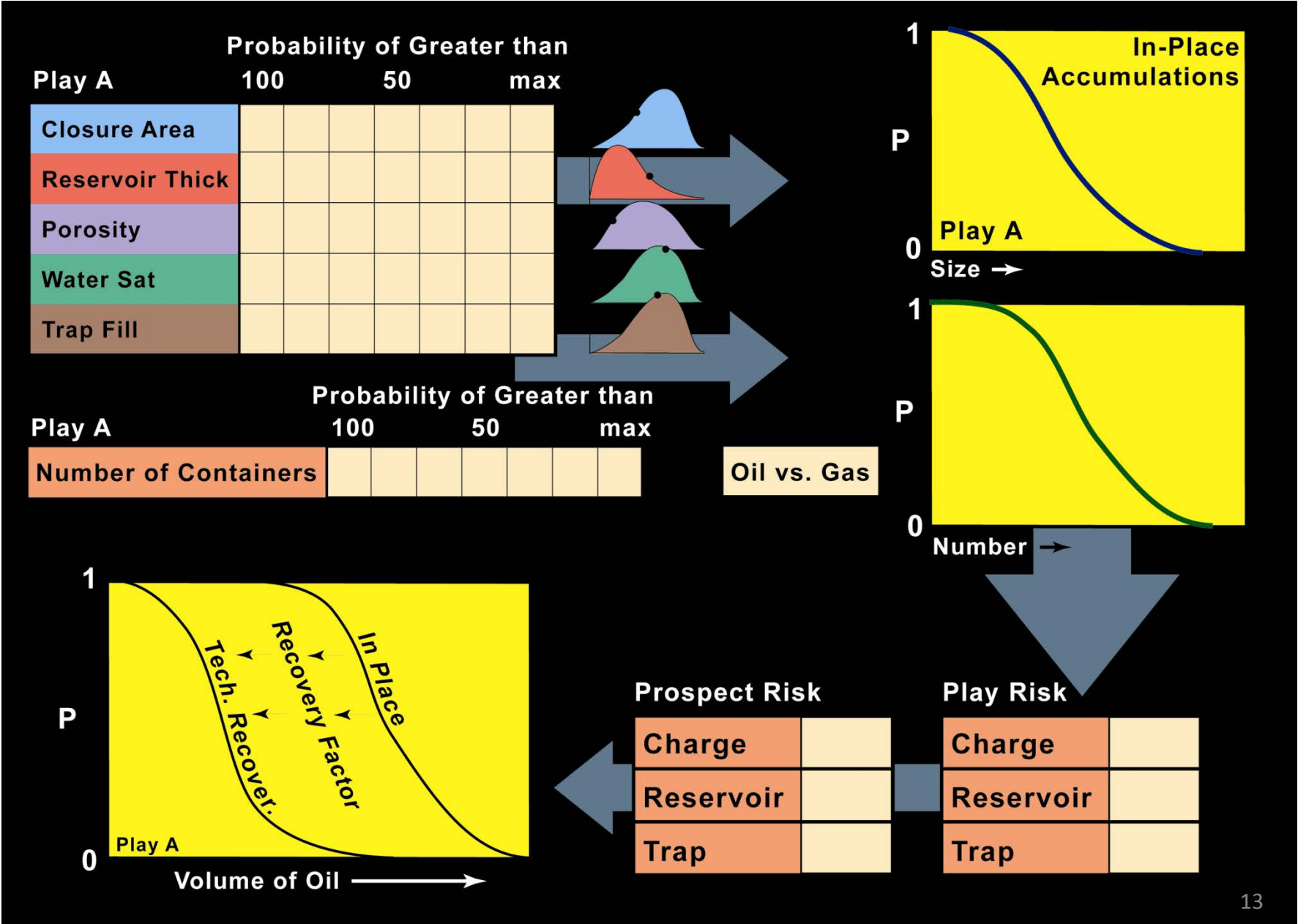
3 prolific source rock intervals



Merging Surface and Subsurface Data

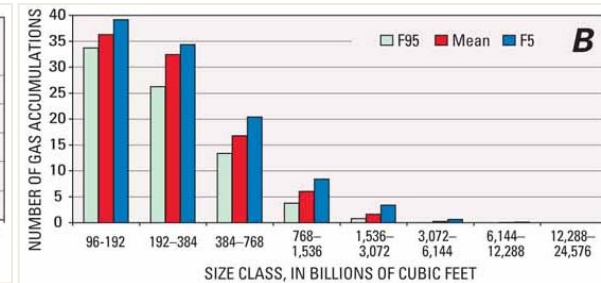
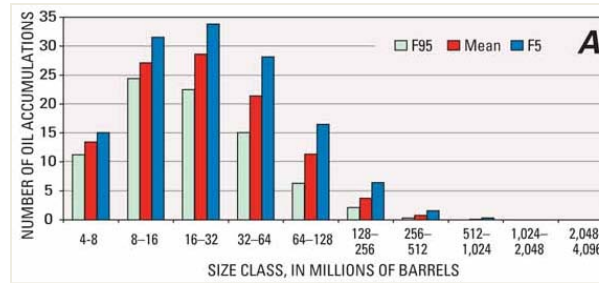


USGS Assessment Methodology – Geologic Basis

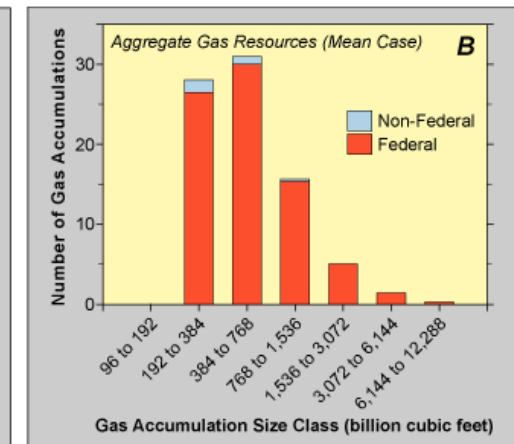
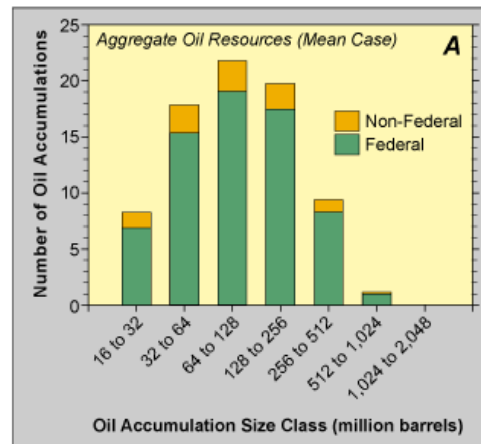


Undiscovered Mean Field Size Distributions - USGS

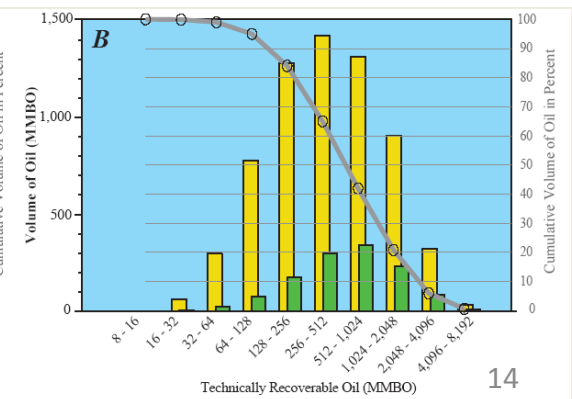
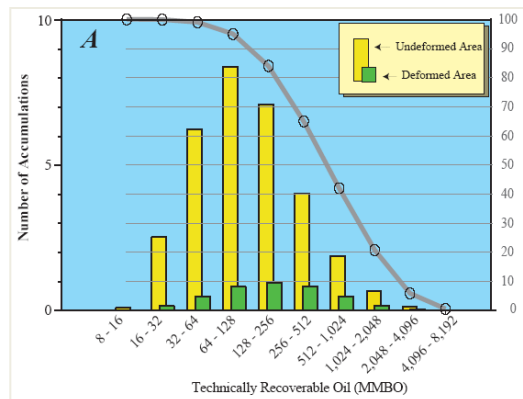
State Lands: ~1 undiscovered oil accumulations > 250 MMBO recoverable. ~ 2 undiscovered gas accumulations > 1.5 TCF recoverable.



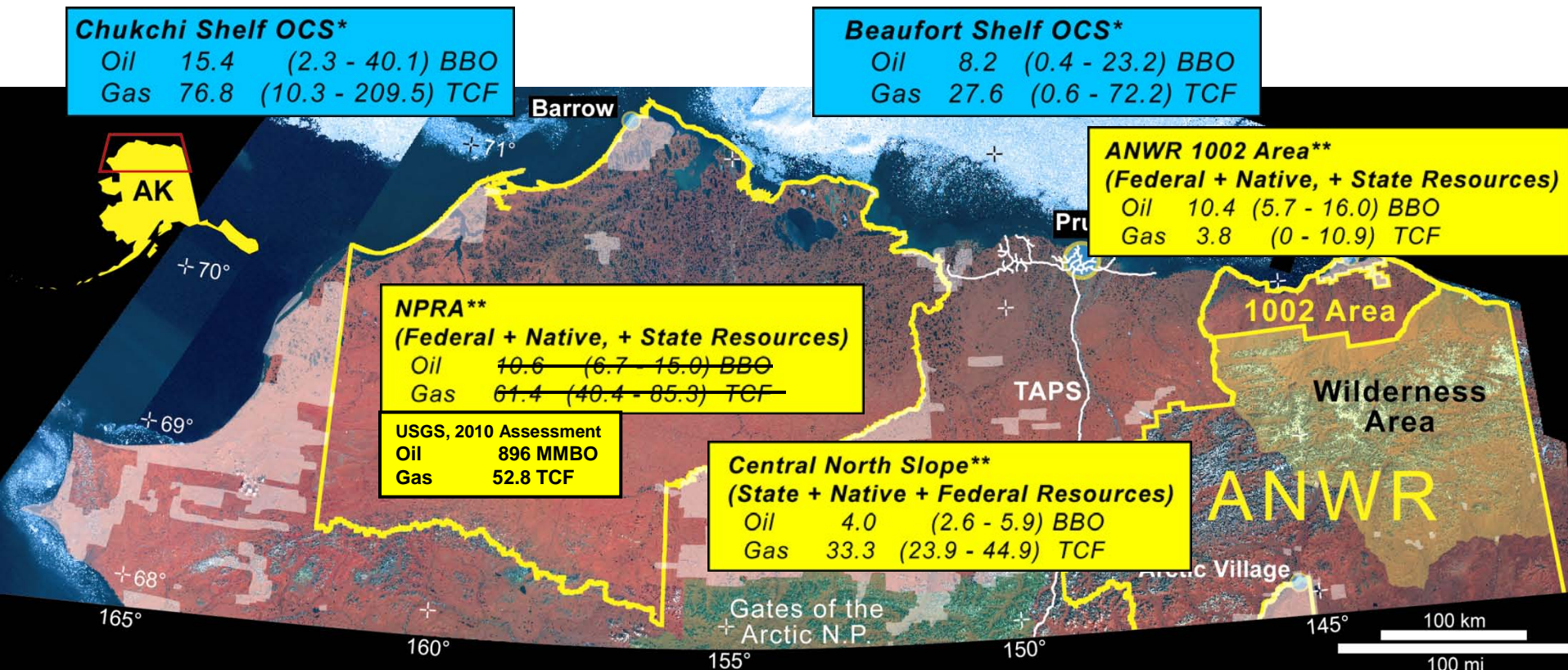
NPRA: ~11 undiscovered oil accumulations > 250 MMBO recoverable. ~7 undiscovered gas accumulations > 1.5 TCF recoverable.



ANWR 1002: ~9 undiscovered oil accumulations > 250 MMBO recoverable (~65% of estimated total recoverable oil volume); gas resource not shown.



USGS & BOEMRE Estimates Undiscovered Petroleum in Arctic Alaska Conventional Reservoirs Only



Total Mean Undiscovered
Technically Recoverable
Conventional Resource:

40 BBO, 207 TCF

* Oil includes crude oil + natural gas liquids
Gas includes nonassociated + associated gas
** Oil includes crude oil only
Gas includes nonassociated gas only

Current USGS and BOEMRE Assessments – Arctic Alaska Undiscovered, Technically Recoverable Conventional Oil and Gas

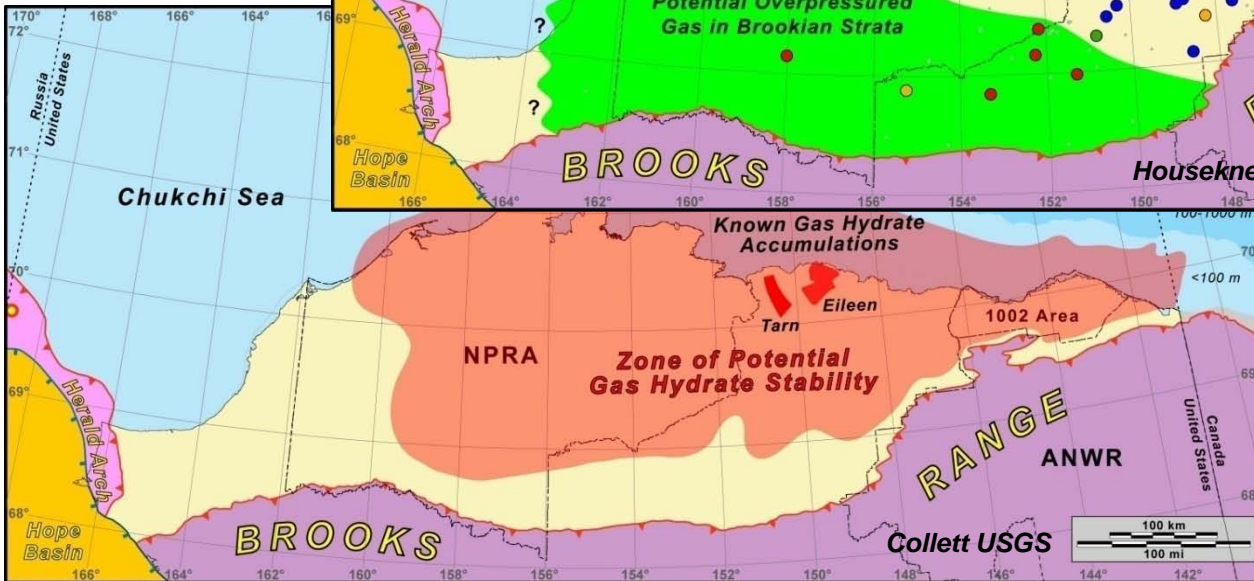
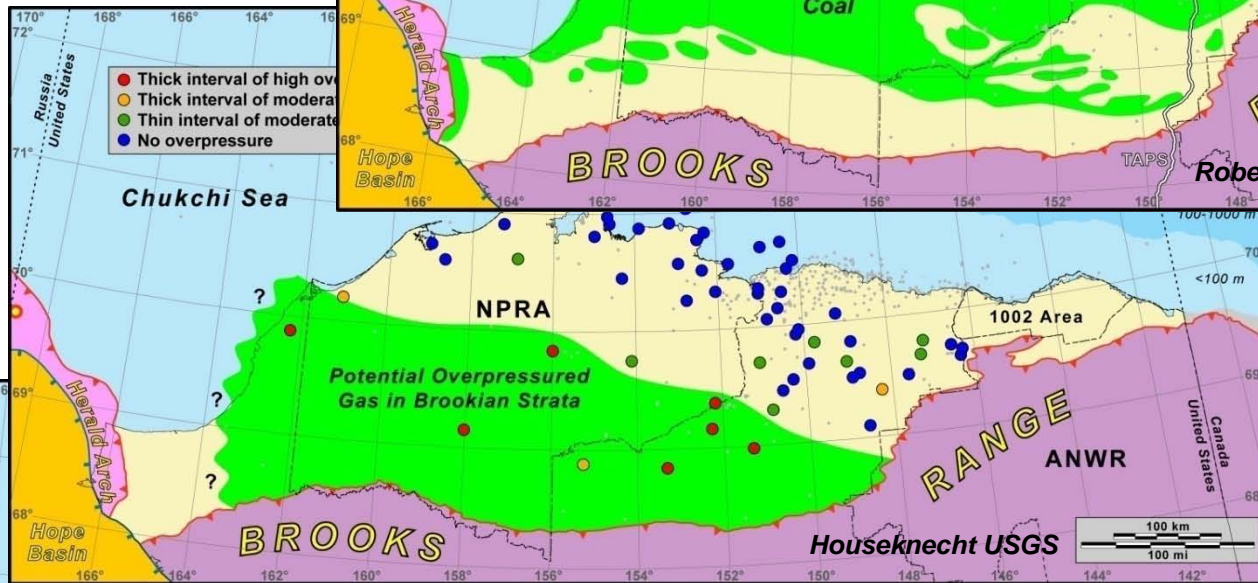
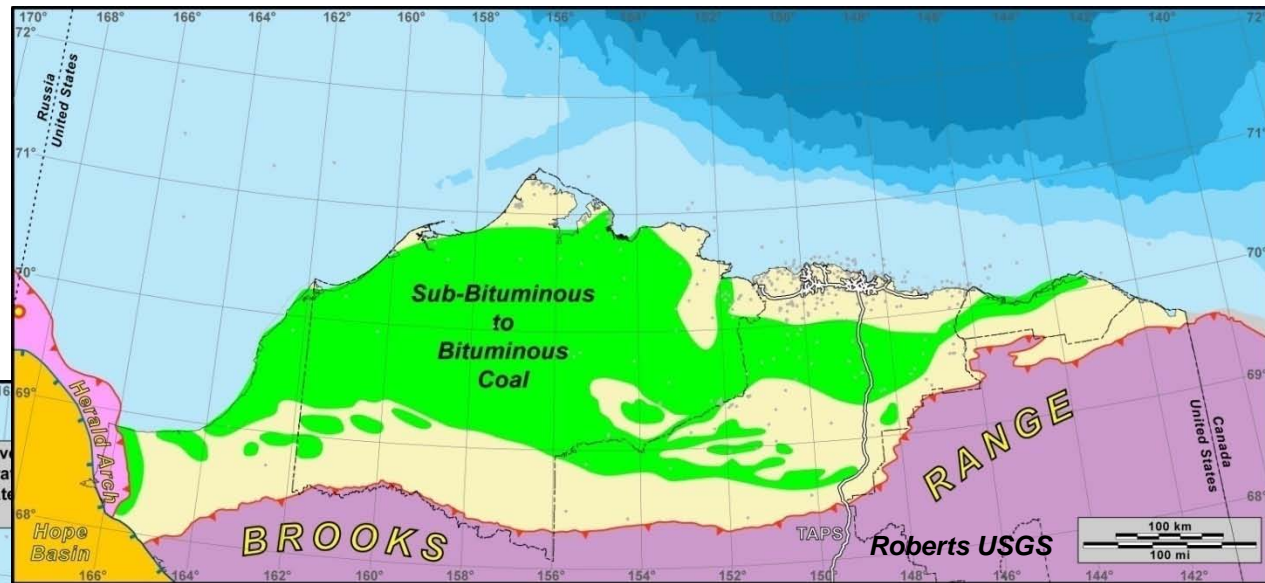
Region and Assessment Segment	Oil, MMSTB (million stock tank barrels)			Gas, BCF (billion cubic feet)			
	Probability Distribution			Probability Distribution			
	F95	Mean	F05	F95	Mean	F05	
North Slope Onshore & State Waters²							
Central North Slope	<i>Oil & Associated gas</i>	2,565	3,984	5,854	2,681	4,198	6,092
	<i>NGL & Non-associated gas</i>	-- ³	478	-- ³	23,939	33,318	44,873
Nat'l Petrol Reserve Alaska	<i>Oil & Associated gas</i>	--	896	--	--	--	--
	<i>NGL & Non-associated gas</i>	-- ³	--	-- ³	--	52,839	--
ANWR coastal plain ²	<i>Oil & Associated gas</i>	5,724	10,360	15,955	--	4,764	--
	<i>NGL & Non-associated gas</i>	-- ³	190	-- ³	0	3,841	10,852
total - North Slope Onshore		-- ³	15,908	-- ³	98,960	-- ³	
Arctic Alaska Outer Continental Shelf (OCS)							
Chukchi Shelf	<i>Oil & all gas</i>	2,317	15,380	40,075	10,316	76,772	209,527
Beaufort Shelf	<i>Oil & all gas</i>	412	8,224	23,235	649	27,645	72,178
Hope Basin	<i>Oil & all gas</i>	0	150	600	0	3,770	14,980
total - Arctic OCS (offshore)		6,030	23,754	53,170	27,830	108,187	247,190
TOTAL - Arctic Alaska		-- ³	39,662	-- ³	207,147	-- ³	

“Unconventional” Gas Resources (continuous resources)

Coalbed Gas

Overpressured, Basin-centered Gas

Gas Hydrates



Evaluation in Progress